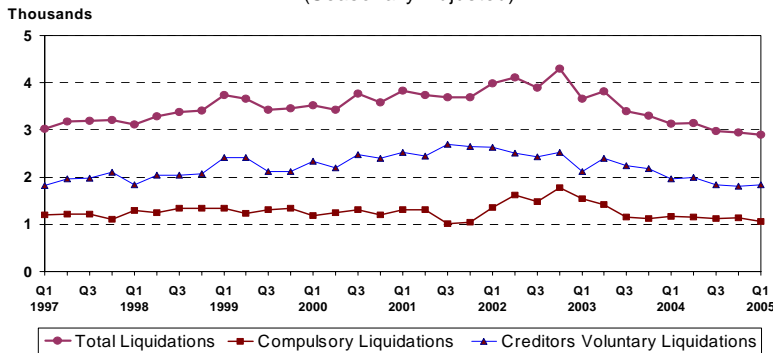


**STRICTLY EMBARGOED UNTIL 9.30 AM, 6 May 2005**

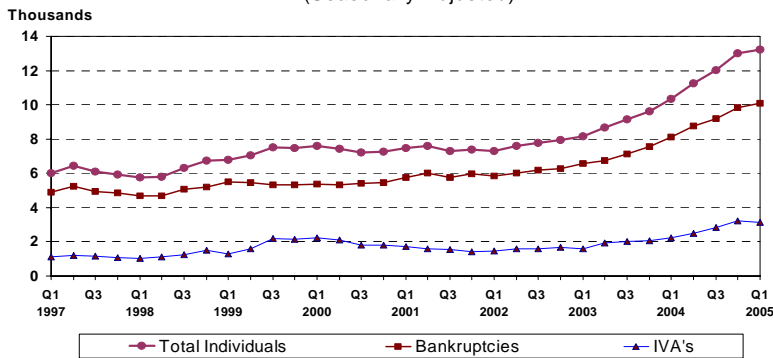
## STATISTICS RELEASE: INSOLVENCIES IN THE FIRST QUARTER 2005

**Number of Company Liquidations in England and Wales**  
(Seasonally Adjusted)



Source: DTI

**Number of Individual Insolvencies in England and Wales**  
(Seasonally Adjusted)



Source: DTI

### COMPANY LIQUIDATIONS

There were 2,900 liquidations in England and Wales in the first quarter of 2005 on a seasonally adjusted basis. This was a decrease of 1.3% on the previous quarter and a decrease of 7.4% on the same period a year ago.

This was made up of 1,064 compulsory liquidations, a decrease of 5.9% on the previous quarter and a decrease of 9.2% on the corresponding quarter of last year, and 1,835 creditors voluntary liquidations, an increase of 1.5% on the previous quarter and a decrease of 6.3% on the corresponding quarter of last year.

0.7% of active companies went into liquidation in the twelve months ended Q1 2005, the same as the previous quarter and a decrease on the corresponding quarter of 2004.

### INDIVIDUAL INSOLVENCIES

There were 13,229 individual insolvencies in England and Wales in the first quarter of 2005 on a seasonally adjusted basis. This was an increase of 1.6% on the previous quarter and an increase of 27.9% on the same period a year ago.

This was made up of 10,091 bankruptcies, an increase of 2.8% on the previous quarter and 24.5% on the corresponding quarter of last year, and 3,139 Individual Voluntary Arrangements (IVA's), a decrease of 2.1% on the previous quarter and an increase of 40.1% on the corresponding quarter of the previous year.

**Number of Insolvencies in England and Wales (seasonally adjusted)**

	2004 Q1r	2004 Q2r	2004 Q3r	2004 Q4r	2005 Q1p	<i>Percentage change Q1 2005 on:</i>	
						<i>Q4 2004</i>	<i>Q1 2004</i>
<b>Company Liquidations</b>	<b>3,131</b>	<b>3,154</b>	<b>2,969</b>	<b>2,938</b>	<b>2,900</b>	<b>-1.3</b>	<b>-7.4</b>
of which: <b>Compulsory</b>	1,172	1,153	1,128	1,131	1,064	-5.9	-9.2
<b>Creditors</b>	1,959	2,001	1,841	1,807	1,835	1.5	-6.3
<b>Voluntary</b>							
<b>Individuals</b>	<b>10,343</b>	<b>11,255</b>	<b>12,032</b>	<b>13,020</b>	<b>13,229</b>	<b>1.6</b>	<b>27.9</b>
of which: <b>Bankruptcies</b>	8,103	8,779	9,202	9,814	10,091	2.8	24.5
<b>IVA's</b>	2,240	2,476	2,830	3,206	3,139	-2.1	40.1

p = provisional, r = revised

**Notes to Editors**

1. The Official Insolvency Statistics are the most comprehensive record of the number of insolvencies and bankruptcies and provide a more accurate picture for analysing business conditions. The figures include businesses and individuals, with a breakdown by type of insolvency procedure. The figures treat Scotland separately (as insolvencies are defined differently in Scotland) and give an industrial analysis (for which the figures for England & Wales are published one quarter in arrears).

2. The statistics are derived from administrative records of the DTI Insolvency Service and Companies House Executive Agencies. The figures for company liquidations are made up of compulsory liquidations (winding-up orders made by the courts) and creditors' voluntary liquidations registered at Companies House. Figures for individual insolvencies comprise bankruptcy orders and individual voluntary arrangements under the Insolvency Act 1986 and deeds of arrangement under the Deeds of Arrangement Act 1914. Individual voluntary arrangements and deeds of arrangement are now included under one column.

3. Numbers of insolvencies are not directly comparable with numbers of new business formations. Statistics of business start-ups and closures that are directly comparable with each other have been assembled from VAT records and are published by the Department of Trade and Industry. The latest figures are those for 2003, and were issued in a DTI press notice on 3 November 2004. More detailed figures are available via the on-line database NOMIS. Additionally, analysis into the number of firms in the United Kingdom estimated the total number of businesses at the start of 2003 at 4 million.

4. The X11ARIMA program (developed by Statistics Canada) is used for the seasonal adjustment of the insolvency statistics, this being the recommended program within UK National Statistics.

5. A company or individual with debts that they are unable to pay as they fall due is said to be **insolvent**.

6. Insolvent companies are dealt with under the Insolvency Act of 1986. They can **either** be the subject of a **compulsory liquidation** (winding-up) order obtained from the Court by a creditor, member or director **or** themselves pass a resolution, subject to the approval of a creditors' meeting that the company be wound up voluntarily (**creditors voluntary liquidations**). In either case they are said to have been **wound-up**, and numbers are given in Tables 1 and 6. A third type of winding-up, members' voluntary liquidation, is not included because it does not involve insolvency.

7. The Insolvency Act 1986 also introduced the procedures of **company administration orders** and **company voluntary arrangements**. The administration procedure gives a period of time during which creditors are restrained from taking action and a court appointed administrator puts forward proposals to deal with the company's financial difficulties. The Company Voluntary Arrangement procedure aids business by enabling a company in financial difficulty to come to a binding agreement with its creditors. These are listed separately in Table 3.

8. The Enterprise Act 2002 introduced revisions to the corporate administration procedures, replacing Part II of the Insolvency Act 1986 with Schedule B1. These include the introduction of additional entry routes into administration that do not require the making of an administration order and a streamlined process for **Administrations** whereby a company can in some circumstances be dissolved without recourse to liquidation. The primary objective of administration (and of Company Voluntary Arrangements) is the rescue of the company as a going concern; where liquidation does result these cases will be recorded under the insolvency figures at Table 1. These provisions came into force on 15<sup>th</sup> September 2003 and **Administrations under the Enterprise Act** have been included on Table 3 from Q3 2003 (dissolution follows 3 months after a notice is filed with the Registrar of Companies, if no objections are raised by the court).

9. **Receivership appointments** comprise **administrative receivers** appointed under the 1986 Act and certain other receivership appointments, for example under the Law of Property Act 1925. Due to the use of the same statutory documentation for different types of receivership, it is not possible to give a breakdown between them. The provisions of the Enterprise Act 2002 (section 250) have made some changes to the procedures for administrative receivership from 15 September 2003.

10. For individuals the term **bankrupt** is used to indicate insolvency.

11. Insolvent individuals in England and Wales are dealt with mainly under the Insolvency Act 1986. A **bankruptcy order** is made on the petition of the debtor or one of his creditors when the Court is satisfied that there is no prospect of the debt being paid. (Figures for bankruptcy orders include **administration orders**, which are bankruptcy orders relating to the estate of a deceased debtor). On 1 April 2004 there was an increase in the amount of the petition deposit required before a bankruptcy order can be made. There was a significant rise in the number of bankruptcy orders made in the last two weeks before the increase in petition deposits became effective. There are also **individual voluntary arrangements** and **deeds of arrangement**, which enable debtors to come to an agreement with their creditors. Table 2 summarises all of the above types of individual insolvencies.

12. Insolvent individuals in Scotland are subject to **sequestration** under the Bankruptcy (Scotland) Act 1985. (There are no deeds of arrangement or individual voluntary arrangements in Scotland). The Bankruptcy (Scotland) Act 1993 amending the 1985 Act came into force on 1 April 1993 and will have affected the number of sequestrations in the Scottish Courts.

13. Under the Insolvency Act 1986 and the Insolvent Partnerships Order, insolvent partnerships may be wound up like an unregistered company or administered following bankruptcy orders against the partners. Insolvent Partnerships can also enter administration or a voluntary arrangement.

### National Statistics

National Statistics are produced to high professional standards set out in the National Statistics Code of Practice. They undergo regular quality assurance reviews to ensure that they meet customer needs. They are produced free from any political interference.

You can find a range of National Statistics on the Internet – [www.statistics.gov.uk](http://www.statistics.gov.uk)

**Press Enquiries:** Lorna Dennis  
Insolvency Service Press Officer  
+44 (0)207 637 6279  
**Public Enquiries** +44 (0)20 7215 5000  
**Textphone** +44 (0)20 7215 6740  
(for those with hearing impairment)  
**Press Office Fax** +44 (0)20 7222 4382  
[www.dti.gov.uk](http://www.dti.gov.uk)

Non Media Enquiries  
Statistics and Analysis Directorate:  
**Margaret Sims** +44 (0)20 7215 3305  
**Gary Mills** +44 (0)20 7215 3286  
E-Mail:  
[margaret.sims@dti.gsi.gov.uk](mailto:margaret.sims@dti.gsi.gov.uk)  
[gary.mills@dti.gsi.gov.uk](mailto:gary.mills@dti.gsi.gov.uk)  
Internet:  
<http://www.dti.gov.uk/sd>

## 1. COMPANY LIQUIDATIONS\* IN ENGLAND AND WALES

		Not Seasonally Adjusted			Seasonally Adjusted		
Years		Total	Compulsory Liquidations	Creditors' Voluntary Liquidations	Total	Compulsory Liquidations	Creditors' Voluntary Liquidations
<b>1997</b>		12,610	4,735	7,875			
<b>1998</b>		13,203	5,216	7,987			
<b>1999</b>		14,280	5,209	9,071			
<b>2000</b>		14,317	4,925	9,392			
<b>2001</b>		14,972	4,675	10,297			
<b>2002</b>		16,305	6,230	10,075			
<b>2003</b>		14,184	5,234	8,950			
<b>2004</b>		12,192	4,584	7,608			
<b>1997</b>	Q1	3,152	1,232	1,920	3,017	1,193	1,824
	Q2	3,142	1,276	1,866	3,183	1,218	1,965
	Q3	3,148	1,155	1,993	3,196	1,215	1,980
	Q4	3,168	1,072	2,096	3,214	1,109	2,105
<b>1998</b>	Q1	3,265	1,333	1,932	3,123	1,289	1,834
	Q2	3,251	1,312	1,939	3,291	1,250	2,041
	Q3	3,323	1,275	2,048	3,373	1,339	2,035
	Q4	3,364	1,296	2,068	3,416	1,338	2,078
<b>1999</b>	Q1	3,912	1,379	2,533	3,741	1,334	2,407
	Q2	3,590	1,294	2,296	3,653	1,234	2,420
	Q3	3,376	1,240	2,136	3,428	1,303	2,125
	Q4	3,402	1,296	2,106	3,458	1,339	2,119
<b>2000</b>	Q1	3,637	1,210	2,427	3,522	1,178	2,344
	Q2	3,370	1,300	2,070	3,431	1,242	2,189
	Q3	3,709	1,231	2,478	3,775	1,306	2,469
	Q4	3,601	1,184	2,417	3,589	1,198	2,391
<b>2001</b>	Q1	3,943	1,359	2,584	3,831	1,315	2,516
	Q2	3,684	1,348	2,336	3,744	1,301	2,443
	Q3	3,640	940	2,700	3,699	1,009	2,690
	Q4	3,705	1,028	2,677	3,698	1,051	2,647
<b>2002</b>	Q1	4,141	1,408	2,733	3,992 r	1,363 r	2,629 r
	Q2	4,066	1,679	2,387	4,117 r	1,614 r	2,502 r
	Q3	3,807	1,389	2,418	3,898 r	1,476 r	2,422 r
	Q4	4,291	1,754	2,537	4,298 r	1,777 r	2,521 r
<b>2003</b>	Q1	3,797	1,585	2,212	3,662 r	1,538 r	2,124 r
	Q2	3,767	1,470	2,297	3,824 r	1,421 r	2,403 r
	Q3	3,314	1,075	2,239	3,388 r	1,151 r	2,238 r
	Q4	3,306	1,104	2,202	3,309 r	1,124 r	2,185 r
<b>2004</b>	Q1	3,248	1,208	2,040	3,131 r	1,172 r	1,959 r
	Q2	3,108	1,197	1,911	3,154 r	1,153 r	2,001 r
	Q3	2,900	1,061	1,839	2,969 r	1,128 r	1,841 r
	Q4	2,936	1,118	1,818	2,938 r	1,131 r	1,807 r
<b>2005</b>	Q1 p	3,010	1,101	1,909	2,900	1,064	1,835
<b>Percentage change, latest qtr on corresponding qtr of previous year</b>							
<b>2005</b>	Q1 p	-7.3	-8.9	-6.4	-7.4	-9.2	-6.3

\* including partnerships.

p provisional.

r revised, reflecting update of seasonally adjusted figures.

## 2. INDIVIDUAL INSOLVENCIES IN ENGLAND AND WALES

		Not Seasonally Adjusted			Seasonally Adjusted		
Years		Total	Bankruptcy Orders	Individual Voluntary Arrangements *	Total	Bankruptcy Orders	Individual Voluntary Arrangements *
<b>1997</b>		24,441	19,892	4,549			
<b>1998</b>		24,549	19,647	4,902			
<b>1999</b>		28,806	21,611	7,195			
<b>2000</b>		29,528	21,550	7,978			
<b>2001</b>		29,775	23,477	6,298			
<b>2002</b>		30,587	24,292	6,295			
<b>2003</b>		35,604	28,021	7,583			
<b>2004</b>		46,650	35,898	10,752			
<b>1997</b>	Q1	6,211	5,117	1,094	6,021	4,891	1,131
	Q2	6,478	5,278	1,200	6,421	5,221	1,200
	Q3	6,152	4,958	1,194	6,093	4,934	1,159
	Q4	5,600	4,539	1,061	5,906	4,846	1,060
<b>1998</b>	Q1	5,953	4,938	1,015	5,746	4,697	1,049
	Q2	5,855	4,755	1,100	5,776	4,676	1,100
	Q3	6,380	5,113	1,267	6,306	5,075	1,231
	Q4	6,361	4,841	1,520	6,721	5,199	1,522
<b>1999</b>	Q1	7,025	5,799	1,226	6,785	5,511	1,275
	Q2	7,120	5,527	1,593	7,042	5,441	1,601
	Q3	7,592	5,365	2,227	7,503	5,334	2,169
	Q4	7,069	4,920	2,149	7,476	5,326	2,150
<b>2000</b>	Q1	7,837	5,667	2,170	7,612	5,361	2,251
	Q2	7,532	5,414	2,118	7,440	5,326	2,114
	Q3	7,316	5,451	1,865	7,200	5,393	1,808
	Q4	6,843	5,018	1,825	7,276	5,471	1,805
<b>2001</b>	Q1	7,750	6,078	1,672	7,480	5,741	1,739
	Q2	7,714	6,115	1,599	7,594	6,001	1,593
	Q3	7,434	5,817	1,617	7,308	5,751	1,557
	Q4	6,877	5,467	1,410	7,393	5,985	1,409
<b>2002</b>	Q1	7,411	6,027	1,384	7,280 r	5,836 r	1,444 r
	Q2	7,861	6,269	1,592	7,592 r	6,002 r	1,590 r
	Q3	7,892	6,249	1,643	7,772 r	6,177 r	1,595 r
	Q4	7,423	5,747	1,676	7,944 r	6,278 r	1,666 r
<b>2003</b>	Q1	8,426	6,912	1,514	8,152 r	6,570 r	1,583 r
	Q2	8,889	6,948	1,941	8,691 r	6,750 r	1,941 r
	Q3	9,291	7,221	2,070	9,141 r	7,130 r	2,012 r
	Q4	8,998	6,940	2,058	9,620 r	7,572 r	2,048 r
<b>2004</b>	Q1	10,665	8,524	2,141	10,343 r	8,103 r	2,240 r
	Q2	11,535	9,060	2,475	11,255 r	8,779 r	2,476 r
	Q3	12,227	9,315	2,912	12,032 r	9,202 r	2,830 r
	Q4	12,223	8,999	3,224	13,020 r	9,814 r	3,206 r
<b>2005</b>	Q1 p	13,190	10,188	3,002	13,229	10,091	3,139
<b>Percentage change, latest qtr on corresponding qtr of previous year</b>							
<b>2005</b>	Q1 p	23.7	19.5	40.2	27.9	24.5	40.1

\* including Deeds of Arrangement

p provisional.

r revised, reflecting update of seasonally adjusted figures.

**3. ADMINISTRATIONS, COMPANY VOLUNTARY ARRANGEMENTS AND RECEIVERSHIPS IN ENGLAND AND WALES REGISTERED AT COMPANIES HOUSE (not seasonally adjusted)**

Year		Receivership Appointments*	Administrator Appointments**	In Administration (Enterprise Act 2002)**	Company Voluntary Arrangements
<b>1997</b>		1,837	196		629
<b>1998</b>		1,713	338		470
<b>1999</b>		1,618	440		475
<b>2000</b>		1,595	438		557
<b>2001</b>		1,914	698		597
<b>2002</b>		1,541	643		651
<b>2003</b>		1,261	497	247	726
<b>2004</b>		864	1	1,601	597
<b>1997</b>	Q1	578	58		173
	Q2	428	44		150
	Q3	425	42		178
	Q4	406	52		128
<b>1998</b>	Q1	516	85		54
	Q2	395	46		127
	Q3	443	105		153
	Q4	359	102		136
<b>1999</b>	Q1	419	193		106
	Q2	397	81		128
	Q3	375	64		120
	Q4	427	102		121
<b>2000</b>	Q1	454	89		124
	Q2	429	135		160
	Q3	355	101		121
	Q4	357	113		152
<b>2001</b>	Q1	649	125		132
	Q2	435	141		163
	Q3	369	146		141
	Q4	461	286		161
<b>2002</b>	Q1	455	176		151
	Q2	346	151		151
	Q3	377	162		181
	Q4	363	154		168
<b>2003</b>	Q1	315	160		178
	Q2	298	167		165
	Q3	334	154	14	171
	Q4	314	16	233	212
<b>2004</b>	Q1	224	1	331	176
	Q2	199	0	392	154
	Q3	203	0	421	137
	Q4	238	0	457	130
<b>2005</b>	Q1 p	114	0	489	179

p provisional

\*Includes administrative receiverships and others, for example under the Law of Property Act 1925

\*\* See paragraph 8 of the Press Release "Notes to Editors" for changes wef 15 September 2003 under the Enterprise Act 2002

#### 4. COMPANY LIQUIDATIONS\* IN ENGLAND AND WALES - INDUSTRIAL ANALYSIS

##### NOT SEASONALLY ADJUSTED

INDUSTRY	1997	1998	1999	2000	2001	2002	2003	2004	2004				
									Q4	Q1	Q2	Q3	Q4
<i>AGRICULTURE AND HORTICULTURE</i>	51	65	75	67	90	76	52	35	11	3	15	9	8
<i>MANUFACTURING</i>													
Food, drink and tobacco	93	89	67	104	71	61	69	38	13	12	12	8	6
Chemicals	31	57	35	61	37	46	30	21	10	5	5	4	7
Metals and engineering	591	594	698	683	704	739	828	630	194	206	159	136	129
Textiles and clothing	596	526	419	423	320	304	244	168	52	47	42	49	30
Timber and furniture	181	149	190	187	199	179	92	69	27	22	14	17	16
Paper, printing and publishing	364	426	387	386	484	545	376	291	88	91	57	83	60
Other	613	652	780	678	717	768	430	379	99	101	104	93	81
<b>TOTAL</b>	<b>2,469</b>	<b>2,493</b>	<b>2,576</b>	<b>2,522</b>	<b>2,532</b>	<b>2,642</b>	<b>2,069</b>	<b>1,596</b>	<b>483</b>	<b>484</b>	<b>393</b>	<b>390</b>	<b>329</b>
<i>CONSTRUCTION AND TRANSPORT</i>													
Construction	1,419	1,325	1,529	1,474	1,509	1,840	1,728	1,653	415	417	435	388	413
Transport and Communication	540	504	443	526	481	652	694	596	167	164	153	142	137
<b>TOTAL</b>	<b>1,959</b>	<b>1,829</b>	<b>1,972</b>	<b>2,000</b>	<b>1,990</b>	<b>2,492</b>	<b>2,422</b>	<b>2,249</b>	<b>582</b>	<b>581</b>	<b>588</b>	<b>530</b>	<b>550</b>
<i>WHOLESALE</i>													
Food, drink and tobacco	158	139	187	150	125	142	108	124	16	40	30	29	25
Motor vehicles	41	60	38	29	24	64	208	210	45	66	45	45	54
Other	340	364	394	391	363	512	788	486	145	139	116	121	110
<b>TOTAL</b>	<b>539</b>	<b>563</b>	<b>619</b>	<b>570</b>	<b>512</b>	<b>718</b>	<b>1,104</b>	<b>820</b>	<b>206</b>	<b>245</b>	<b>191</b>	<b>195</b>	<b>189</b>
<i>RETAILING</i>													
Food, drink and tobacco	219	186	193	200	114	132	159	121	35	23	42	25	31
Motor vehicles and filling stations	132	120	142	141	172	174	59	45	12	8	9	20	8
Other	891	847	919	853	833	902	578	548	137	144	132	136	136
<b>TOTAL</b>	<b>1,242</b>	<b>1,153</b>	<b>1,254</b>	<b>1,194</b>	<b>1,119</b>	<b>1,208</b>	<b>796</b>	<b>714</b>	<b>184</b>	<b>175</b>	<b>183</b>	<b>181</b>	<b>175</b>
<i>SERVICES</i>													
Insurance	111	101	118	57	28	35	48	49	15	13	10	11	15
Other financial & business services	1,528	1,617	1,831	1,605	1,618	3,215	3,886	3,392	912	887	837	810	858
Hotels and Catering	609	626	562	530	538	740	566	511	139	115	140	131	125
<b>TOTAL</b>	<b>2,248</b>	<b>2,344</b>	<b>2,511</b>	<b>2,192</b>	<b>2,184</b>	<b>3,990</b>	<b>4,500</b>	<b>3,952</b>	<b>1,066</b>	<b>1,015</b>	<b>987</b>	<b>952</b>	<b>998</b>
<i>OTHERS</i>													
	4,102	4,756	5,273	5,772	6,545	5,179	3,241	2,826	774	745	751	643	687
<b>TOTAL</b>	<b>12,610</b>	<b>13,203</b>	<b>14,280</b>	<b>14,317</b>	<b>14,972</b>	<b>16,305</b>	<b>14,184</b>	<b>12,192</b>	<b>3,306</b>	<b>3,248</b>	<b>3,108</b>	<b>2,900</b>	<b>2,936</b>

\* including partnerships.



## 5. BANKRUPTCIES IN ENGLAND AND WALES - INDUSTRIAL ANALYSIS

### NOT SEASONALLY ADJUSTED

INDUSTRY	1997	1998	1999	2000	2001	2002	2003	2004	2004				
									Q4	Q1	Q2	Q3	Q4
<b>SELF EMPLOYED</b>													
<i>AGRICULTURE AND HORTICULTURE</i>	155	157	183	173	183	132	151	204	34	35	47	65	57
<i>MANUFACTURING</i>													
Food, drink and tobacco	18	21	17	18	10	19	14	7	0	1	4	0	2
Chemicals	5	7	4	2	2	6	2	6	0	2	2	0	2
Metals and engineering	413	378	385	306	339	257	242	376	48	57	148	62	109
Textiles and clothing	76	81	87	81	75	33	46	27	7	6	15	2	4
Timber and furniture	98	96	94	90	88	59	82	65	14	8	21	19	17
Paper, printing and publishing	104	101	112	80	75	70	58	63	12	15	19	11	18
Other	116	110	111	84	79	111	100	90	22	24	19	16	31
<b>TOTAL</b>	<b>830</b>	<b>794</b>	<b>810</b>	<b>661</b>	<b>668</b>	<b>555</b>	<b>544</b>	<b>634</b>	<b>103</b>	<b>113</b>	<b>228</b>	<b>110</b>	<b>183</b>
<i>CONSTRUCTION AND TRANSPORT</i>													
Construction	2,182	1,919	1,911	1,741	1,783	1,637	1,781	1,658	433	454	434	402	368
Transport and communication	1,162	1,060	1,187	1,120	1,134	1,095	1,116	1,249	243	325	306	313	305
<b>TOTAL</b>	<b>3,344</b>	<b>2,979</b>	<b>3,098</b>	<b>2,861</b>	<b>2,917</b>	<b>2,732</b>	<b>2,897</b>	<b>2,907</b>	<b>676</b>	<b>779</b>	<b>740</b>	<b>715</b>	<b>673</b>
<i>WHOLESALE</i>													
Food, drink and tobacco	62	53	45	49	40	48	33	28	4	8	10	4	6
Motor vehicles	28	20	22	29	20	14	15	13	4	5	3	3	2
Other	78	92	83	83	61	44	47	40	18	8	14	13	5
<b>TOTAL</b>	<b>168</b>	<b>165</b>	<b>150</b>	<b>161</b>	<b>121</b>	<b>106</b>	<b>95</b>	<b>81</b>	<b>26</b>	<b>21</b>	<b>27</b>	<b>20</b>	<b>13</b>
<i>RETAILING</i>													
Food, drink and tobacco	546	514	438	424	347	311	251	280	58	67	77	66	70
Motor vehicles and filling stations	276	238	241	237	199	138	128	136	29	29	33	39	35
Other	1,048	971	1,032	801	792	680	609	621	149	153	146	151	171
<b>TOTAL</b>	<b>1,870</b>	<b>1,723</b>	<b>1,711</b>	<b>1,462</b>	<b>1,338</b>	<b>1,129</b>	<b>988</b>	<b>1,037</b>	<b>236</b>	<b>249</b>	<b>256</b>	<b>256</b>	<b>276</b>
<i>SERVICES</i>													
Insurance	105	79	54	45	39	31	24	28	7	5	8	8	7
Other financial & business services	1,117	1,057	1,162	1,127	1,107	1,057	1,023	1,242	238	324	337	298	283
Hotels and catering	1,603	1,309	1,376	1,263	1,187	1,041	1,038	951	207	286	226	221	218
<b>TOTAL</b>	<b>2,825</b>	<b>2,445</b>	<b>2,592</b>	<b>2,435</b>	<b>2,333</b>	<b>2,129</b>	<b>2,085</b>	<b>2,221</b>	<b>452</b>	<b>615</b>	<b>571</b>	<b>527</b>	<b>508</b>
<i>OTHER</i>	2,077	2,157	2,179	2,199	2,279	2,071	2,379	2,480	581	625	586	607	662
<b>TOTAL SELF EMPLOYED</b>	<b>11,269</b>	<b>10,420</b>	<b>10,723</b>	<b>9,952</b>	<b>9,839</b>	<b>8,854</b>	<b>9,139</b>	<b>9,564</b>	<b>2,108</b>	<b>2,437</b>	<b>2,455</b>	<b>2,300</b>	<b>2,372</b>
<b>OTHER INDIVIDUALS</b>													
Employees	2,625	3,141	4,357	4,601	5,525	5,900	7,101	9,528	1,807	2,151	2,397	2,534	2,446
No occupation and unemployed	3,051	3,384	4,457	4,856	5,848	6,965	8,978	12,643	2,233	3,097	3,146	3,344	3,056
Directors & promoters of companies	310	272	330	296	328	323	420	458	177	83	127	123	125
Occupation unknown	2,637	2,430	1,744	1,845	1,937	2,250	2,383	3,705	615	756	935	1,014	1,000
<b>TOTAL OTHER INDIVIDUALS</b>	<b>8,623</b>	<b>9,227</b>	<b>10,888</b>	<b>11,598</b>	<b>13,638</b>	<b>15,438</b>	<b>18,882</b>	<b>26,334</b>	<b>4,832</b>	<b>6,087</b>	<b>6,605</b>	<b>7,015</b>	<b>6,627</b>
<b>TOTAL BANKRUPTCIES</b>	<b>19,892</b>	<b>19,647</b>	<b>21,611</b>	<b>21,550</b>	<b>23,477</b>	<b>24,292</b>	<b>28,021</b>	<b>35,898</b>	<b>6,940</b>	<b>8,524</b>	<b>9,060</b>	<b>9,315</b>	<b>8,999</b>

## 6. INSOLVENCIES IN SCOTLAND (not seasonally adjusted)

Years	Individuals		Companies		
	Sequestrations	Total	Compulsory Liquidations	Creditors' Voluntary Liquidations	
<b>1997</b>	2,502	477	254		223
<b>1998</b>	3,016	566	338		228
<b>1999</b>	3,195	572	364		208
<b>2000</b>	2,965	583	344		239
<b>2001</b>	3,048	602	378		224
<b>2002</b>	3,215	788	556		232
<b>2003</b>	3,328	631	436		195
<b>2004</b>	3,297	621	431		190
<b>1997</b>	Q1	619	126	66	60
	Q2	658	125	66	59
	Q3	589	117	61	56
	Q4	636	109	61	48
<b>1998</b>	Q1	702	150	79	71
	Q2	756	151	93	58
	Q3	830	124	82	42
	Q4	728	141	84	57
<b>1999</b>	Q1	776	153	83	70
	Q2	807	136	89	47
	Q3	842	144	98	46
	Q4	770	139	94	45
<b>2000</b>	Q1	751	136	75	61
	Q2	751	153	92	61
	Q3	712	139	85	54
	Q4	751	155	92	63
<b>2001</b>	Q1	709	166	102	64
	Q2	750	141	82	59
	Q3	839	108	75	33
	Q4	750	187	119	68
<b>2002</b>	Q1	832	240	170	70
	Q2	797	175	123	52
	Q3	834	184	139	45
	Q4	752	189	124	65
<b>2003</b>	Q1	799	183	133	50
	Q2	858	168	118	50
	Q3	845	154	109	45
	Q4	826	126	76	50
<b>2004</b>	Q1	720	153	95	58
	Q2	851	147	110	37
	Q3	923	168	113	55
	Q4	803	153	113	40
<b>2005</b>	Q1 p	908	140	103	37
Percentage change, latest qtr on corresponding qtr of previous year					
<b>2005</b>	Q1 p	26.1	-8.5	8.4	-36.2

p provisional

The Bankruptcy (Scotland) Act 1993, amending the Bankruptcy (Scotland) Act 1985, came into force on 1 April 1993 and will have affected the number of sequestrations in the Scottish Courts from the second quarter of 1993 onwards.

## 7. COMPANY LIQUIDATIONS IN SCOTLAND - INDUSTRIAL ANALYSIS

### NOT SEASONALLY ADJUSTED

INDUSTRY	1997	1998	1999	2000	2001	2002	2003	2004	2004				2005
									Q1	Q2	Q3	Q4	Q1p
<i>AGRICULTURE AND HORTICULTURE</i>	6	11	5	8	9	2	5	1	0	0	0	1	1
<b>MANUFACTURING</b>													
Food, drink and tobacco	13	17	4	4	5	6	6	6	2	0	1	3	0
Chemicals	2	6	1	3	6	1	0	0	0	0	0	0	0
Metals and engineering	43	28	15	28	20	24	20	14	2	6	1	5	4
Textiles and clothing	11	23	32	14	13	14	5	15	3	3	6	3	2
Timber and furniture	10	18	9	5	5	15	1	5	1	1	1	2	1
Paper, printing and publishing	13	15	14	6	9	15	13	8	0	4	4	0	0
Other	25	18	29	24	22	28	30	35	15	2	12	6	3
<b>TOTAL</b>	<b>117</b>	<b>125</b>	<b>104</b>	<b>84</b>	<b>80</b>	<b>103</b>	<b>75</b>	<b>83</b>	<b>23</b>	<b>16</b>	<b>25</b>	<b>19</b>	<b>10</b>
<b>CONSTRUCTION AND TRANSPORT</b>													
Construction	62	104	108	120	124	84	76	80	17	12	30	21	24
Transport and Communication	20	24	16	23	22	13	9	11	3	5	2	1	5
<b>TOTAL</b>	<b>82</b>	<b>128</b>	<b>124</b>	<b>143</b>	<b>146</b>	<b>97</b>	<b>85</b>	<b>91</b>	<b>20</b>	<b>17</b>	<b>32</b>	<b>22</b>	<b>29</b>
<b>WHOLESALE</b>													
Food, drink and tobacco	4	9	12	6	8	4	5	7	1	1	3	2	3
Motor vehicles	3	0	7	16	10	6	2	3	0	0	2	1	1
Other	15	20	16	25	24	17	18	20	5	3	9	3	5
<b>TOTAL</b>	<b>22</b>	<b>29</b>	<b>35</b>	<b>47</b>	<b>42</b>	<b>27</b>	<b>25</b>	<b>30</b>	<b>6</b>	<b>4</b>	<b>14</b>	<b>6</b>	<b>9</b>
<b>RETAILING</b>													
Food, drink and tobacco	2	1	8	5	2	8	2	6	3	0	1	2	2
Motor vehicles and filling stations	9	9	6	4	2	5	10	4	1	3	0	0	1
Other	24	18	34	33	24	27	31	28	7	10	7	4	9
<b>TOTAL</b>	<b>35</b>	<b>28</b>	<b>48</b>	<b>42</b>	<b>28</b>	<b>40</b>	<b>43</b>	<b>38</b>	<b>11</b>	<b>13</b>	<b>8</b>	<b>6</b>	<b>12</b>
<b>SERVICES</b>													
Insurance	5	6	7	4	8	4	11	4	0	0	1	3	0
Other financial & business services	36	60	54	44	88	79	59	116	16	5	52	43	9
Hotels and Catering	28	26	22	25	23	56	37	39	6	9	14	10	14
<b>TOTAL</b>	<b>69</b>	<b>92</b>	<b>83</b>	<b>73</b>	<b>119</b>	<b>139</b>	<b>107</b>	<b>159</b>	<b>22</b>	<b>14</b>	<b>67</b>	<b>56</b>	<b>23</b>
<b>OTHERS</b>	<b>146</b>	<b>153</b>	<b>173</b>	<b>186</b>	<b>178</b>	<b>380</b>	<b>291</b>	<b>219</b>	<b>71</b>	<b>83</b>	<b>22</b>	<b>43</b>	<b>56</b>
<b>TOTAL</b>	<b>477</b>	<b>566</b>	<b>572</b>	<b>583</b>	<b>602</b>	<b>788</b>	<b>631</b>	<b>621</b>	<b>153</b>	<b>147</b>	<b>168</b>	<b>153</b>	<b>140</b>

p provisional

**8. ANNUAL RATE OF COMPANY LIQUIDATIONS (for latest 12 months) - COMPANY LIQUIDATIONS AS A PERCENTAGE OF THE NUMBER OF COMPANIES REGISTERED**

		<b>England &amp; Wales</b>		<b>Scotland</b>	
		<u>% of Active Register</u>	<u>% of Total Register</u>	<u>% of Active Register</u>	<u>% of Total Register</u>
<b>1997</b>	Q1	1.3	1.2	0.8	0.7
	Q2	1.3	1.1	0.8	0.7
	Q3	1.2	1.1	0.8	0.7
	Q4	1.2	1.1	0.8	0.7
<b>1998</b>	Q1	1.2	1.0	0.8	0.7
	Q2	1.2	1.0	0.8	0.7
	Q3	1.2	1.0	0.8	0.7
	Q4	1.2	1.0	0.9	0.8
<b>1999</b>	Q1	1.2	1.1	0.8	0.8
	Q2	1.2	1.1	0.8	0.7
	Q3	1.2	1.1	0.8	0.8
	Q4	1.2	1.0	0.8	0.7
<b>2000</b>	Q1	1.1	1.0	0.8	0.7
	Q2	1.1	1.0	0.8	0.7
	Q3	1.1	1.0	0.8	0.7
	Q4	1.1	1.0	0.8	0.7
<b>2001</b>	Q1	1.1	1.0	0.8	0.7
	Q2	1.1	1.0	0.8	0.7
	Q3	1.1	1.0	0.7	0.7
	Q4	1.1	1.0	0.8	0.7
<b>2002</b>	Q1	1.1	1.0	0.9	0.8
	Q2	1.1	1.0	0.9	0.8
	Q3	1.1	1.0	1.0	0.9
	Q4	1.1	1.0	1.0	0.9
<b>2003</b>	Q1	1.1	1.0	0.9	0.8
	Q2	1.0	0.9	0.8	0.8
	Q3	1.0	0.9	0.8	0.7
	Q4	0.9	0.8	0.7	0.6
<b>2004</b>	Q1	0.8	0.8	0.6	0.6
	Q2	0.8	0.7	0.6	0.5
	Q3	0.7	0.7	0.6	0.5
	Q4	0.7	0.6	0.6	0.6
<b>2005</b>	Q1 p	0.7	0.6	0.6	0.5

p provisional

Notes:

1. The total register includes companies being wound up or dormant.
2. Calculated from company liquidations in the latest twelve month period divided by the average number of companies in that period.